



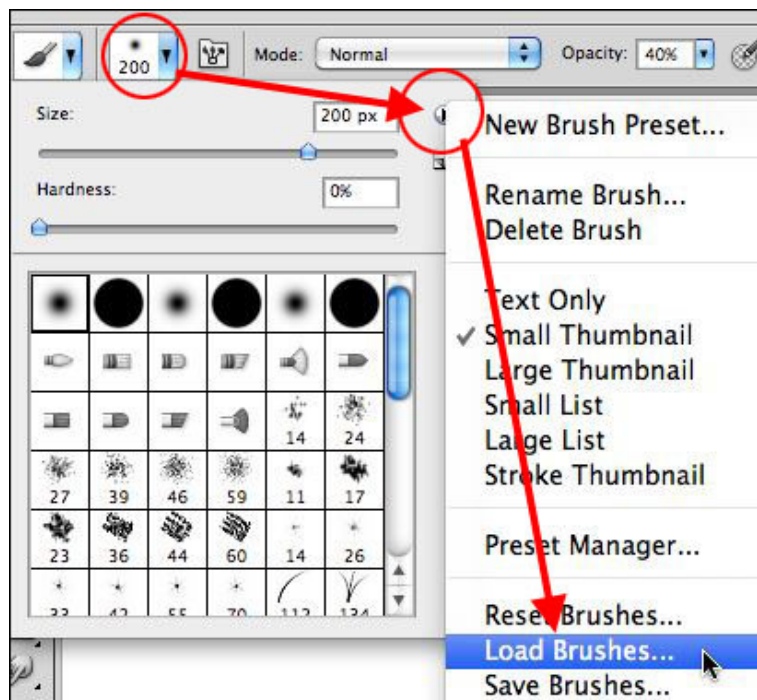
## How To Use Grungy Frame Brushes

### In Adobe Photoshop

By Linda Sattgast

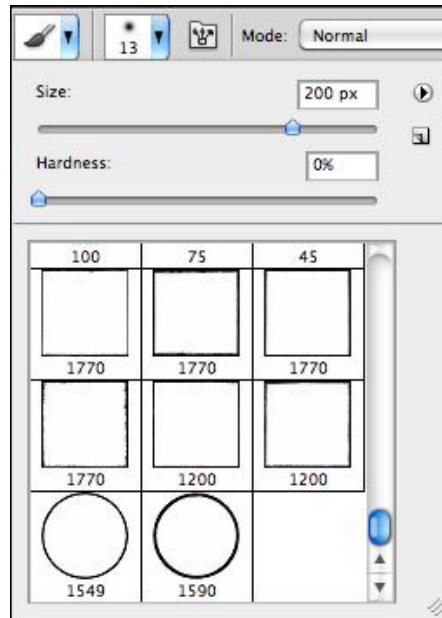
### Load The Grungy Frame Brushes

- Select the Brush tool from the Tool Bar.
- Click on the down facing arrow in the Options Bar to open the Brush Picker.
- Click on the right facing arrow at the top of the Brush Picker to open a fly-out menu, and click on Load Brushes.



- Navigate to the folder where you downloaded the Grungy Frame brushes and double click on the DS Grungy Frames.abr file.
- If you're asked whether to append or replace, choose append.

- Scroll to the bottom of the Brush Picker to see the Grungy Frame brushes.



## Prepare Your Document

- Create a new document (File > New) or open an existing document (File > Open). Open the photo you intend to use with the Grungy Frame brushes.
- Use the Move tool to click and drag the photo onto your document and move it into place.

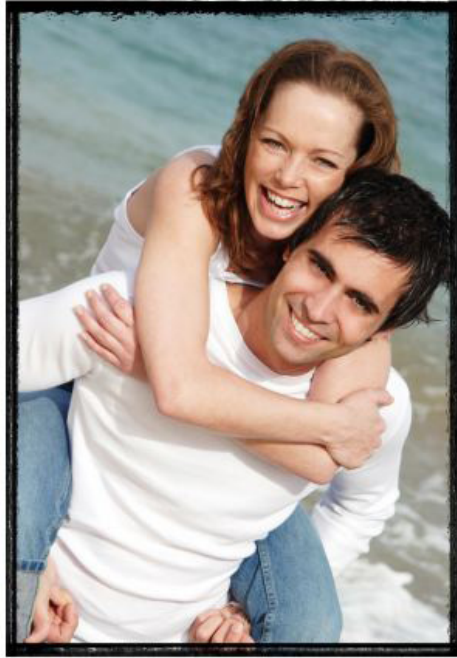
## Add A Grungy Frame With Minor Adjustments

- Get the Brush tool and open the Brush Picker in the Options Bar. Double click on the Grungy Frame brush of your choice.
- Click on the Create a new layer icon at the bottom of the Layers panel.



- Hover your mouse over the photo to see how the size of the frame fits. To change the size of your brush, press the right Bracket key to make it larger or the left Bracket key to make it smaller.
- When the frame is as close to the size of your photo as you can make it, click once to apply the brush.
- To make minor adjustments, press Ctrl T (Mac: Cmd T) to get a Transform outline. Click and drag from any handle until the frame fits the photo. Double click inside the outline to accept the changes.

Here's how your photo should look:

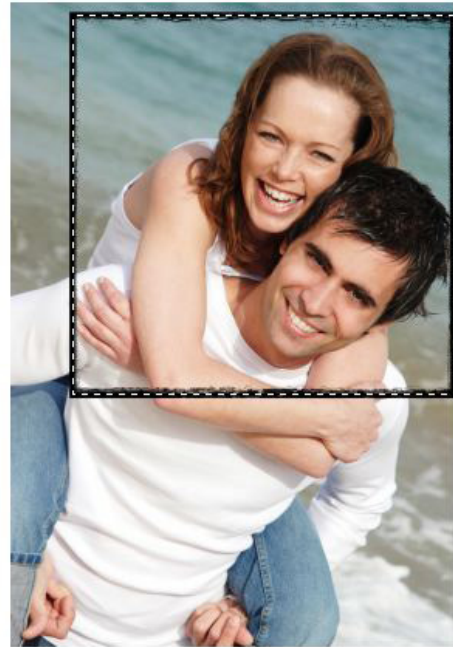


### Add A Grungy Frame With Major Adjustments

Sometimes you only want the frame over part of a photo, or the frame would distort too much if you adjusted the size to fit your photo. In that case, follow the same instructions to apply the frame where you want it on a new layer above your photo. Here's how I placed mine using a square grungy frame:



- To get rid of the extra photo outside the frame, select the Rectangular Marquee tool (or the Elliptical Marquee tool if the frame is round) and click and drag an outline just inside the outer edge of the frame, making sure you don't go beyond the edge.
- If you want a perfect square or perfect circle, press the Shift key as you click and drag your outline.
- To reposition the outline as you draw it, add the Spacebar, which will temporarily allow you to move the outline. Let go of the Spacebar to continue to resize.
- When you're satisfied with the position of the outline, let go of the mouse and then let go of any other keys (such as the Shift key).



- Choose Select > Inverse to select everything BUT the area you want to keep.
- In the Layers panel, click on the photo layer to select it.
- Press the Delete key to get rid of the part of the photo that extends beyond the grungy frame outline.
- Choose Select > Deselect to get rid of the outline.

Here's my finished photo with a grungy frame:



Enjoy more tutorials like this for Adobe Photoshop by signing up for my [Tip of the Week newsletter](#).

*Linda Sattgast*

